

Surge Protection SP2

DATASHEET

Two-stage transient voltage protectors provide primary and secondary protection against lightning, switching, and electrostatic discharges. Provides protection on 4-20mA, sensor, and AC power in one convenient enclosure.

Features

- Automatic Reset - will not interrupt service
- Nanosecond response time
- No maintenance required

Specifications

- Operating Temperature: -40° to +85°C
- Enclosure: NEMA4 Steel

4-20mA Protector

Protek 420E236 - Maximum Ratings

- Operating Line Current: 100mA
- Transient Source Voltage: 6kV
- Transient Current (8/20µs): 5kA/Line

Sensor Protector

Protek 422ELC - Maximum Ratings

- Operating Line Current: 200mA
- Transient Source Voltage: 20kV
- Transient Current (8/20µs): 10kA/Line

AC Power Line Surge Suppressor

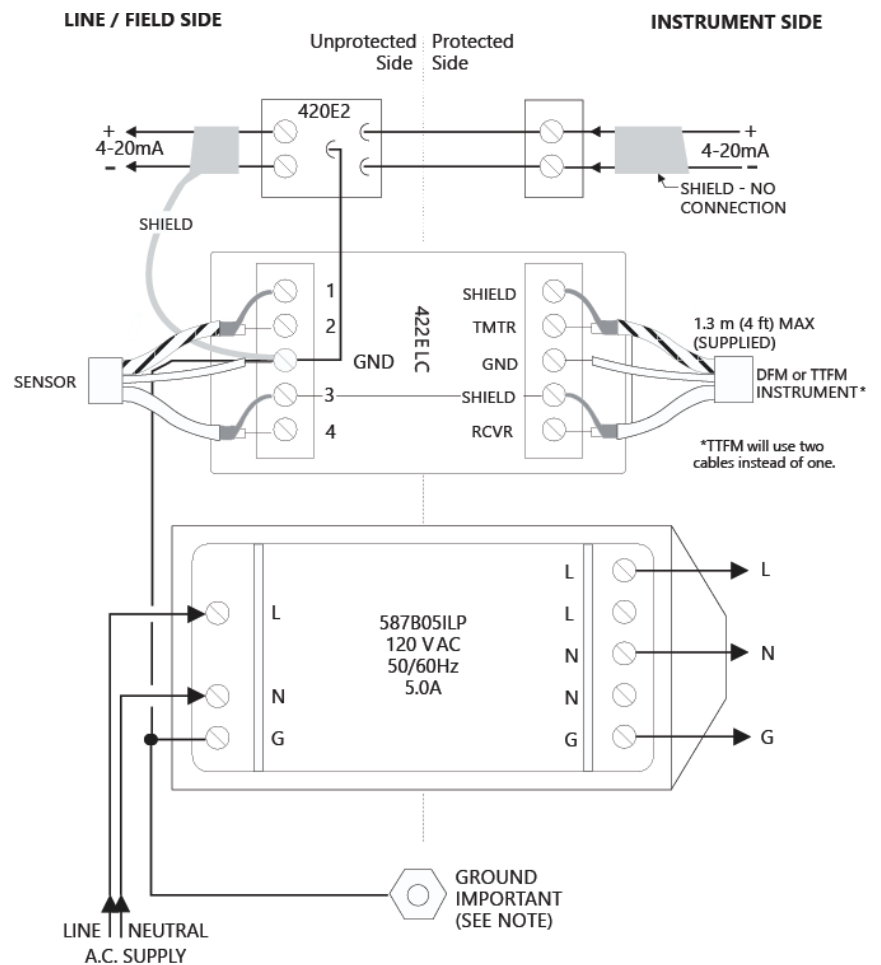
Protek 587B - Maximum Ratings:

- Line Voltage: 130 V AC
- Line Current: 5.0 A
- Transient Voltage: 6,000 V peak
- Transient Current: 3,000 A peak
- CSA/NRTL Certified

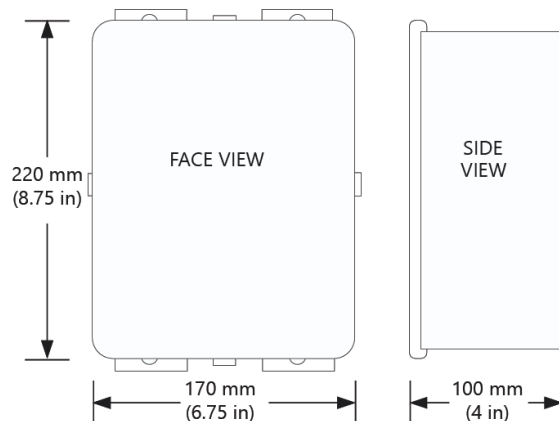
Installation Notes

- Cables between the SP2 Surge Protector enclosure and the Pulsar meter electronics / controller should be as close as possible and should not exceed 4 ft. (1.3 m) length.
- Lightning contains a broad spectrum of frequencies up to 1 MHz. A low impedance path to earth ground is necessary. A ground strap or a #6 AWG stranded wire is recommended.
- Sensor connection for DFM / TTFM with 2ISB option should not be made to SP2. Connect directly to intrinsic safety barriers.
- Use Greenlee-type hole cutter to make conduit entries in enclosure.

Connections



Enclosure Dimensions



INFO@PULSARMEASUREMENT.COM

Pulsar Measurement is a trading name of Pulsar Process Measurement, Ltd.

Copyright © 2022 Pulsar Measurement
Registered Address: 1 Chamberlain Square CS, Birmingham B3 3AX
Registered No.: 3345604 England & Wales

United States
+1 888-473-9546

Asia
+60 102 591 332

Canada
+1 855-300-9151

Oceania
+61 428 692 274

United Kingdom
+44 (0) 1684 891371

pulsarmeasurement.com