

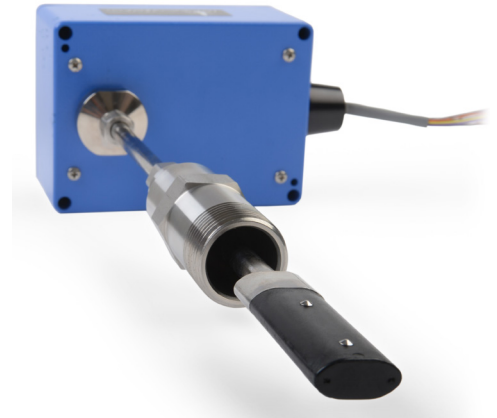


Greyline

# ISM 5.0

## Technical Specifications:

The ISM 5.0 Insertion Magmeter senses flow using a low maintenance electromagnetic design with no moving parts. The dual-electrode sensor and continuous auto-zero function provides high accuracy – even at low flow rates.



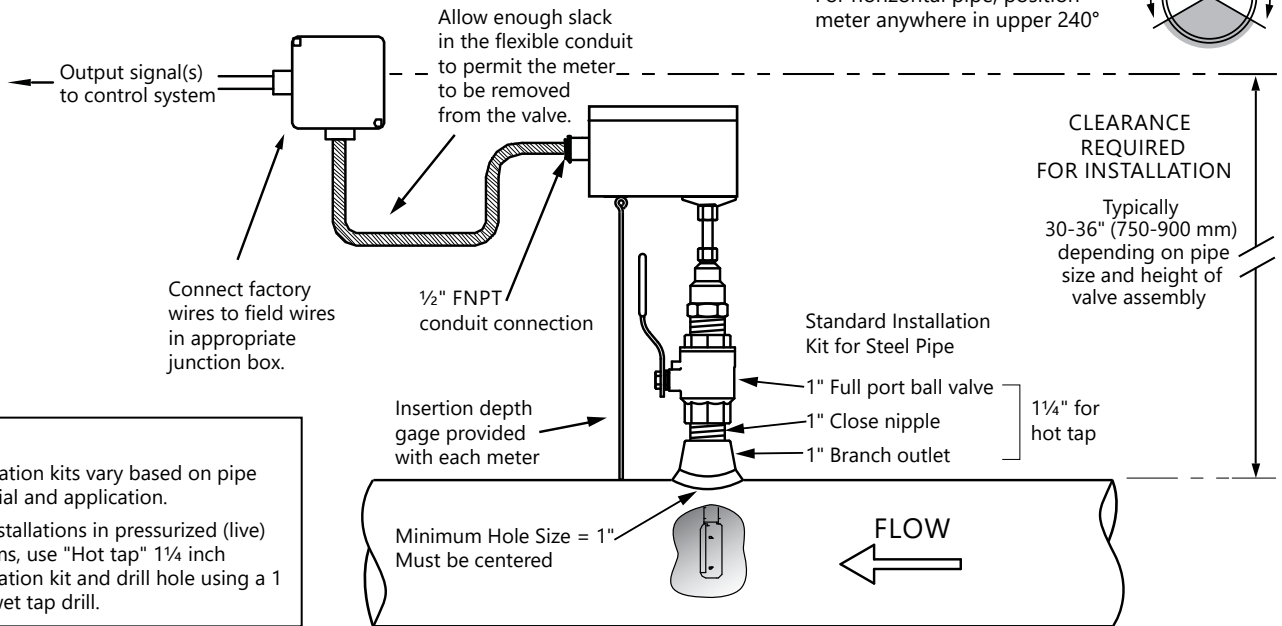
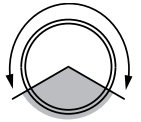
### GENERAL SPECIFICATIONS

<b>Flow Measurement Range:</b>	0.03 m/s to 6 m/s (0.1 ft/s to 20 ft/s), 200:1 turndown
<b>Accuracy:</b>	±1.0% of reading from 0.6 m/s to 6.0 m/s (2 ft/s to 20 ft/s) ±0.06 m/s (0.02 ft/s) below 0.6 m/s (2 ft/s)
<b>Nominal Pipe Diameter:</b>	75 mm to 1,800 mm (3 in to 72 in)
<b>Liquid Temperature Range:</b>	-26 °C to +121°C (-15 °F to +250 °F)
<b>Operating Temp. (Electronics):</b>	-28 °C to +65°C (-20 °F to +150°F)
<b>Maximum Operating Pressure:</b>	200 psi (14 bar)
<b>Pressure Drop:</b>	Less than 0.007 bar (0.1 psi) at 3.65 m/s (12 ft/s)
<b>Conductivity Range:</b>	20-60,000 µSiemens/cm
<b>Power Input:</b>	20-28 V DC, 250mA at 24 V DC (6 Watts) 20-28V AC, 50-60Hz, 8VA
<b>Analog Output:</b>	Selectable 4-20mA, 0-5 V or 0-10 V
<b>Frequency Output:</b>	0-15 V peak pulse, 0-500 Hz
<b>Scalable Pulse Output:</b>	Isolated solid state dry contact rated 50 V DC, 100mA maximum Pulse duration: 0.5 sec, 1 sec, 2 sec, or 6 sec
<b>Signal Cable Length:</b>	7.6 m (25 ft) PVC jacketed multi-conductor
<b>Electronics Enclosure:</b>	Watertight, airtight, dust proof (IP68) powder coated cast aluminum
<b>Wetted Materials:</b>	316L stainless steel, polypropylene
<b>Approximate Shipping Weight:</b>	2.75 kg (6 lb)

### POPULAR OPTIONS

<b>Model ISM 5.0-B:</b>	For bi-directional flow
<b>Extra Sensor Cable:</b>	Separate length 7.6 m, 15 m, or 30 m (25 ft, 50 ft, or 100 ft) PVC jacketed multi-conductor
<b>Standard Installation Hardware Kit:</b>	Threaded branch outlet, close nipple, 1 in full port isolation valve
<b>Hot Tap Installation Hardware Kit:</b>	31.75 mm (1.25 in) branch outlet, close nipple, 31.75 mm (1.25 in) full port ball valve
<b>Grounding Rings:</b>	ANSI Class 150, 316 Stainless Steel from 76.2 mm to 1,067 mm (3 in to 42 in) nominal size
<b>Grounding Probes:</b>	Hot Tap, stainless steel
<b>Remote Displays:</b>	D-100-MOD rate/total display with 2 analog inputs, Modbus RTU or TCP/IP DB-1201-01 LCD display with flow direction LED's

- Install in vertical or horizontal pipe
- For horizontal pipe, position meter anywhere in upper 240°



**Note:**  
 Installation kits vary based on pipe material and application.  
 For installations in pressurized (live) systems, use "Hot tap" 1 1/4 inch installation kit and drill hole using a 1 inch wet tap drill.

## Delivering the Measure of Possibility

Pulsar Measurement offers worldwide professional support for all of our products, and our network of reps and distributors all offer full support and training. Our facilities in Malvern, UK and Largo, USA are home to technical support teams who are always available to answer your call or attend your site when required. Our global presence, with direct offices in the UK, USA, Canada, and Malaysia allow us to create close relationships with our customers and provide service, support, training, and information throughout the lifetime of your product.

By taking a step forward in echo processing technology, Pulsar Measurement addresses applications previously thought to be beyond the scope of ultrasonic measurement. This technology improves signal processing at the transducer head which has made it possible to increase resistance to electrical noise, enabling the transducer to 'zone in' on the true echo.

For more information, please visit our website:

[www.pulsarmeasurement.com](http://www.pulsarmeasurement.com)



INFO@PULSARMEASUREMENT.COM

*Pulsar Measurement is a trading name of Pulsar Process Measurement, Ltd.*

*Copyright © 2020 Pulsar Measurement  
 Registered Address: 1 Chamberlain Square CS, Birmingham B3 3AX  
 Registered No.: 3345604 England & Wales*

**United States**  
 11451 Belcher Road South  
 Largo, FL 33773  
 888-473-9546

**Canada**  
 16456 Sixsmith Drive  
 Long Sault, Ont. K0C 1P0  
 855-300-9151

**United Kingdom**  
 Cardinal Building, Enigma  
 Commercial Centre  
 Sandy's Road, Malvern WR14 1JJ  
 +44 (0) 1684 891371